



Killeavy

Castle Estate



Spa

Get closer to what's important

## Wellness at Killeavy Castle Estate

Escape, retreat and unwind during your stay with us. Connect with nature to restore wellness and balance to your life both actively and passively. Our Spa is the perfect haven to practice passive wellness with our broad selection of treatment offerings. Partnered with Elemis for their concept of 'defined by nature and led by science' we embrace a shared vision, values and ethos. Incorporating Elemis products our unique 'field to face' approach uses fresh ingredients from our walled garden such as broccoli, blackcurrants, gooseberry, sage, thyme, basil, peppermint, chamomile and fennel. Nourish your soul and body by combining your treatment with our award winning 'farm to fork' cuisine served at our restaurant, bar or café.

Nature trails set throughout our 350 acre Estate and beyond provide active wellness opportunities such as self-guided walks discovering our mythical woodland, working farm, and walled garden. Nestled beside Slieve Gullion Forest Park and within the unique Ring of Gullion area of outstanding natural beauty, the more adventurous can hire both e-bikes and mountain bicycles or engage walking guides to explore the surrounding district.

Overnight packages are available for Spa Getaways or for retreats such as Mindfulness through Forest Bathing and guided tours that encapsulate the mountain, myth and legend of the Estate and Slieve Gullion region.

# ELEMIS

DEFINED BY NATURE, LED BY SCIENCE



## Our Spa is a hidden haven of tranquillity, luxury and relaxation within the majestic grounds of our rural retreat.

Choose from a range of soothing ELEMIS treatments, reinvigorate tired limbs with a dip in the mountain view hydro pool or simply drift away in the relaxation areas. The restorative treatments and relaxing space will offer solace and refuge; a chance to reconnect with your spiritual self.

Begin your spa experience by enjoying our water therapy area with hydro and exercise pool and views of the magnificent walled garden and farmland.

Move to the Tylarium, a combination of sauna and steam bath to purify and detoxify the body by gently heating up and stimulating circulation before cooling down in our aroma mist and drench showers. For something different, unwind in our outdoor hot tub or relax in one of our luxury heated mosaic tiled loungers.

Our therapists make it personal, concentrating on your needs to personalise your treatments to suit the rhythm of your life and nature of your skin.

Guests who are availing of Spa services have complimentary use of the pool and thermal facilities. A Day Pass for use of these areas is charged at £20 per day, subject to availability and must be booked in advance.

Our opening hours are Monday to Sunday, from 8:00am to 8:00pm. We look forward to welcoming you.

Phone: +44 (0) 28 3044 7999

Email: [spa@killeavycastle.com](mailto:spa@killeavycastle.com)



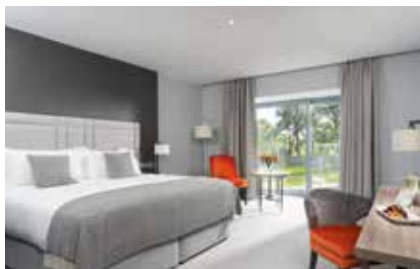


## Day Spa Experiences

<b>Rose Restore</b>	4 hours	<b>£225</b>
Intensely cleansing salt scrub, Garden of England rose restore full body massage, anti-ageing facial, express manicure, deluxe pedicure.		
<b>Peaceful Pregnancy</b>	3 hours	<b>£165</b>
Peaceful pregnancy massage, express manicure, deluxe spa pedicure.		
<b>King of the Castle</b>	2 hours	<b>£130</b>
Deep tissue full body massage, Elemis spa facial.		
<b>Castle Ritual</b>	2 hours	<b>£130</b>
Hot mineral body boost massage, Elemis spa facial.		
<b>Just the Two of Us</b> (per person)	1.5 hours	<b>£115</b>
Couples Swedish full body massage for two, taster facial.		
<b>Pamper and Polish</b>	1.5 hours	<b>£115</b>
Intensely cleansing salt scrub, taster facial and express pedicure.		
<b>Mini Treats</b>	1.5 hours	<b>£115</b>
Swedish back massage, foot and hand massage, taster facial.		
<b>Face and Body Sensations</b>	1 hour	<b>£90</b>
Hot stone back massage, taster facial.		
<b>Perfect Bliss</b>	1 hour	<b>£85</b>
Swedish back massage, taster facial.		

*All Day Spa Experiences have complimentary use of our Spa thermal and relaxation facilities on the day.*





## Residential Spa Experiences

Take time to soak up the full atmosphere of the Estate by staying over in one of our luxurious rooms and choosing from a selection of spa experiences.

### Killeavy Spa Country Escape

from £420 per couple

One night's luxury accommodation with full Irish breakfast, a 7 course evening meal in our restaurant. Includes a 60 minute Elemis spa facial or a 60 minute Swedish full body massage.

### Killeavy Spa C-ation

from £400 per couple

One night's luxury accommodation with full Irish breakfast, a 60 minute Swedish full body massage followed by a 60 minute Elemis spa facial.

### Killeavy Spa Babymoon

from £360 per couple

One night's luxury accommodation with full Irish breakfast, for the mum to be a deluxe 90 minute peaceful pregnancy massage, for the partner choose between a 90 minute deep tissue or hot stone massage.

### Killeavy Spa Serenity

from £310 per couple

One night's luxury accommodation with full Irish breakfast, a 30 minute Swedish back massage followed by a 30 minute taster facial.

### Killeavy Spa Couples Together

from £310 per couple

One night's luxury accommodation with full Irish breakfast. Includes a couples 60 minute hot stones full body massage for two.

Additional Residential Spa Experiences are available on our website [killeavycastle.com](http://killeavycastle.com)

*Terms and Conditions: All experiences are subject to availability. May exclude Bank Holidays and special events. Cannot be used in conjunction with any other promotion or experience. Prices are based on two adults sharing, per room, per night.*



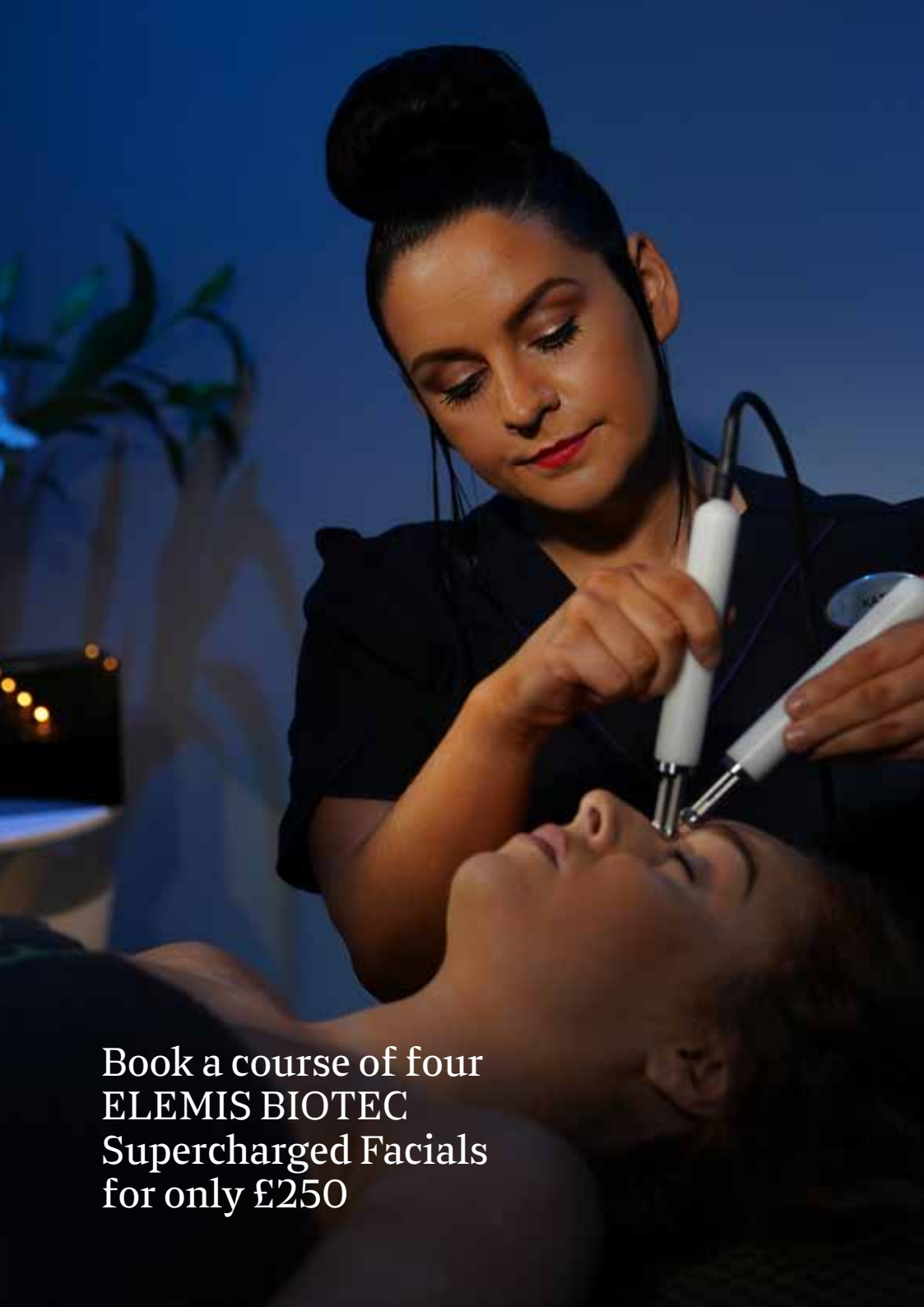


## ELEMIS Spa Facials

The hands of a highly trained ELEMIS therapist are profoundly effective anti-ageing tools. Using a combination of massage techniques from around the world, this is where intuition meets expertise with clinically proven results.

<b>Pro-Collagen Age Defy</b>	60 minutes	<b>£85</b>
Tackle fine lines and wrinkles using techniques such as lymphatic massage and anti-ageing collagen. The age-defying mask goes to work, leaving your skin with a firmer, lifted and more youthful look.		
<b>Dynamic Resurfacing Precision Peel</b>	60 minutes	<b>£85</b>
This highly potent couture resurfacing treatment targets the signs of ageing and dull, tired, uneven skin tone. Using precision layering of enzymes for powerful exfoliation, the deep cleansing stimulates cell regeneration and reduces pigmentation and acne scarring – renews, smooths and revitalises.		
<b>Peptide 24/7 Skin Sync</b>	60 minutes	<b>£75</b>
Target tired skin with this radiance restoring Peptide 24/7 facial. Powerful botanical formulations, exclusive to ELEMIS, are combined with a specialist massage technique to replenish skin with a well rested glow.		
<b>Anti-Blemish Mattify and Calm</b>	60 minutes	<b>£75</b>
Balance oily, unsettled, congested and hormonal skin with this oxygenating, mattifying treatment. Calms the skin while combating oil and shine, restoring microcirculation and re-oxygenating. A deeply detoxifying treatment which leaves skin bright and clear.		
<b>Superfood Pro-Radiance</b>	60 minutes	<b>£75</b>
A nutritional boost rich in superfoods and essential minerals designed to pack stressed, dull skin with energising detoxifying actives. Leaving skin plumper, radiant and lit up with good health.		
<b>Taster Facial</b>	30 minutes	<b>£60</b>
This introduction facial provides a quick and instant pick me-up for any occasion. Maximum results in minimum time. These target treatments will gently but firmly take on the challenges of sensitivity, oiliness and dullness for healthier complexions.		





Book a course of four  
ELEMIS BIOTEC  
Supercharged Facials  
for only £250



## ELEMIS BIOTEC Supercharged Facials

With a unique fusion of actives, touch and technology, combined with the therapists hands, the pioneering BIOTEC machine works to switch your skin back on, increasing its natural cellular energy. The technology turbo-charges touch with clinically proven results of visibly healthy, nourished and energised skin.

**BIOTEC Radiance Renew** 60 minutes **£85**

This cellular boosting treatment targets sluggish complexions. The ultrasonic peel stimulates the removal of impurities and dead skin cells, while the galvanic rejuvenating current restores moisture for instantly clearer and visibly brighter skin.

**BIOTEC Line Eraser** 60 minutes **£85**

Target wrinkles and energise the skin towards optimum performance with microcurrent pulses and red and blue light therapy.

**BIOTEC Firm-a-Lift** 60 minutes **£85**

Rediscover the architecture of your face with this ground-breaking blend of massage and sculpting galvanic technology. Skin is visibly strengthened for a contoured complexion that is remarkably lifted.

**BIOTEC Skin Resurfacer** 60 minutes **£85**

For a refined, even skin tone, a revolutionary facial that uses an ultrasonic peel, massage and light therapy resulting in the smoothest skin imaginable.

**BIOTEC Peptide 24/7 Skin Sync** 60 minutes **£85**

This ground breaking facial combines exclusive botanical formulations with a deeply cleansing ultrasonic peel for a well rested glow. LED light therapy helps reset the clock for optimum wellness, while galvanic technology stimulates the skin for maximum results.

**BIOTEC Sensitive Skin Soother** 60 minutes **£85**

This anti-redness treatment soothes sensitive skin. An oxygen infusion encourages cellular restoration, while red light therapy and calming antioxidants improve the skin's ability to repair itself. The result is calm and soothed skin.





## Elemis Body Therapies

<b>Peaceful Pregnancy Massage</b>	90 minutes	<b>£125</b>
<p>Combines tried and tested safe pregnancy massage techniques adapted to each stage of pregnancy. Specialised positioning and unique Elemis methods are used to ensure the ultimate in comfort and relaxation. This full body massage, facial massage and scalp massage are specially designed to relieve tension and also alleviates swelling in the hands and feet.</p>		
<b>Hot Mineral Body Boost Massage</b>	60 minutes	<b>£80</b>
<p>A powerful treatment to stimulate every cell in the body, helping alleviate muscular pain and remove toxins. This is a revolutionary, minerally-charged experience of skin conditioning, metabolic balancing and energising wellness.</p>		
<b>Garden of England Rose Restore Massage</b>	60 minutes	<b>£80</b>
<p>Take a walk in an English rose garden with this lavishly hydrating full body massage. The unique trio of Rose, Camelina and Poppy seed oils leaves skin exquisitely moisturised, intensely supple and delicately scented.</p>		
<b>Swedish Full Body Massage</b>	60 minutes	<b>£80</b>
<b>Swedish Back Massage</b>	30 minutes	<b>£60</b>
<p>Healing hands revive your body by manipulation of the muscles for lymphatic drainage, muscle tension and sheer relaxation. Repeated treatments dramatically increase vitality and flexibility through increased blood flow.</p>		
<b>Foot and Ankle Massage</b>	30 minutes	<b>£60</b>
<p>Sit back and put your feet up and relax as we ease away the tension in those tired toes and banish the stress on those aching feet with a series of massage techniques, leaving you floating on air.</p>		





## Elemis Advanced Body Therapies

### Hot Stone Therapies

Full Body, Face and Scalp Massage	90 minutes	<b>£125</b>
Full Body Massage	60 minutes	<b>£85</b>
Back Massage	30 minutes	<b>£65</b>

Balinese stones bathed in the Frangipani Monoi Body Oil are worked deep into the muscles, getting into areas of tension. The result is sparkling vitality with the added bonus of intensely hydrated skin.

### Deep Tissue Therapies

Full Body, Face and Scalp Massage	90 minutes	<b>£125</b>
Full Body Massage	60 minutes	<b>£85</b>
Back Massage	30 minutes	<b>£65</b>

Your therapist will select an aromatic oil according to your concerns, be they muscle pain, stress relief, relaxation or balance. The flowing massage works deeper into the tension, encouraging optimum circulation.

### Couples Therapies (price per couple)

Hot Stones Full Body Massage	60 minutes	<b>£180</b>
Deep Tissue Full Body Massage	60 minutes	<b>£180</b>
Swedish Full Body Massage	60 minutes	<b>£170</b>

Enjoy a full body massage in the same room at the same time. Each client will have their own therapist for the duration of the treatment. Side by side in sweet harmony.

Intensely Cleansing Salt Scrub	50 minutes	<b>£65</b>
--------------------------------	------------	------------

Lime and Ginger or Frangipani Fragranced salt will gently slough away dead skin cells, encouraging the regeneration of new cells. It leaves a smooth and responsive canvas, ready to absorb the deeply nourishing body oil.





## Finishing Touches

### Hands and Feet

Deluxe Spa Manicure **£45**  
60 minutes

Deluxe Spa Pedicure **£50**  
60 minutes

Men's Spa Manicure **£27**  
30 minutes

Men's Spa Pedicure **£40**  
40 minutes

Express Manicure **£30**  
30 minutes

Express Pedicure **£38**  
30 minutes

File and Polish **£20**  
20 minutes

\* Add a French Polish **£5**  
10 minutes

### Waxing

Full Leg Wax **£25**

Half Leg Wax **£15**

Basic Bikini Line Wax **£15**

Californian Wax (High Line) **£25**

Brazilian Wax (Fine Strip) **£30**

Hollywood Wax (All Gone) **£35**

Full Arm Wax **£20**

Underarm Wax **£10**

Eyebrow Wax **£8**

Lip Wax **£8**

Chin Wax **£8**

Men's Chest or Back Wax **£25**

### Eye Care

Eyelash Tint **£9**

Eyebrow Tint **£7**

Eyelash Tint, Eyebrow Tint  
and Shape **£20**

*\* Please be advised all tinting treatments require a patch test 24 hours in advance.*



## How to Spa

**Arrival:** We kindly request that you arrive 20 minutes before your treatment time so a detailed Consultation Form can be completed in order for the therapist to adapt the treatment to suit your individual needs. Please be advised that if you arrive late, the time of your treatment will be shortened in consideration of the next guest and you will be charged at the full treatment price.

**Etiquette:** If you are a hotel guest please arrive at the Spa in your robe and slippers which will be provided for you in your guestroom. If you are a Day Spa guest these will be provided to you upon arrival. Disposable underwear is provided for your comfort during your spa treatment. Please bring a swimsuit if you wish to use the thermal facilities after your treatment.

**Health Considerations:** When making your spa reservation, kindly advise us of any health conditions, allergies, or injuries which could affect your choice of treatment. Please note the sauna is not recommended for people suffering from high blood pressure and circulatory problems, asthma or respiratory conditions.

**Men's Treatments:** All brochure listed treatments are adaptable and suitable for men. For facial treatments, we recommend that men shave no longer than two hours prior to any treatment.

**Pregnancy:** We have specifically designed treatments for expectant mothers. Please allow our spa team to guide you in selecting which treatments are most suitable for you during this special time. Please note use of the sauna and all other heat therapies are not suitable during pregnancy.

**Treatment Adjustments:** At the Spa, it is all about you, we want to ensure you fully enjoy your treatment. If you would like a change in the amount of pressure during your massage please advise your therapist.

**Prices and Treatments:** Prices and details of treatments are correct at the time of going to print. Management reserves the right to alter or amend any of the details or prices at any time without prior notice.

**Valuables:** We kindly ask that you refrain from bringing valuables to the Spa. Although we provide secure lockers within the changing areas, we cannot take responsibility for loss, theft or damage to personal items. We also request that for your peace and privacy, phones and other electronic devices are turned off whilst in the Spa.

**Lost Property:** All lost property will be handed into Spa reception. Items will be stored for three months, if unclaimed they will be donated to local charities. Please note that the Spa does not and cannot take responsibilities for items left behind or lost during your time with us.

**Children Policy:** Children aged 16 or under are not permitted to use the thermal facilities. You must be 18 or over to book a spa treatment.

**Cancellation Policy:** If you wish to cancel an appointment, please notify us 48 hours in advance. Cancellations with less than 48 hours' notice or no shows will be charged at the full treatment price.

**Refreshments:** We offer a selection of refreshments within the Spa. Dining options are also available in the Hotel Restaurant, Bar or Café.

**Aftercare:** To get the most from your spa experience and to continue homecare, most of our products used are available for retail at our Spa reception.

**Gratuity:** If you wish to leave your therapist a gratuity this is entirely at your own discretion.





## Our Gift Cards provide a luxurious Killeavy experience which is the perfect gift that can be enjoyed long after it is received.

Gift cards can be used throughout the Estate. A monetary value gift card means that your special someone can choose what they desire such as...

- An overnight stay in our luxurious guestrooms.
- A fine dining experience in our restaurant.
- Drinks and a casual meal in our bar.
- Deluxe facial or massage treatment.
- Morning or afternoon tea in our garden terrace or walled garden café.

All monetary gift cards have no expiry date so can be redeemed when best suits you.

To purchase a Gift Card buy online at [killeavycastle.com](http://killeavycastle.com) or for more information phone +44 (0) 28 3044 4888, or email [info@killeavycastle.com](mailto:info@killeavycastle.com)

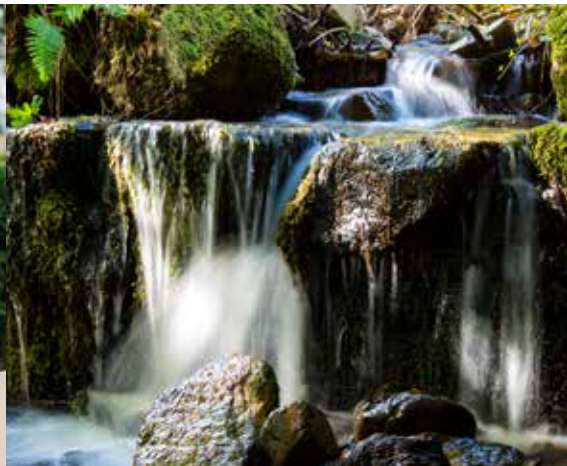




## Sustainability at Killeavy

As stewards of our pristine location and global citizens, sustainability is our focus. From concept, to design, to delivery of operations, we aim to lower our ecological footprint in all practices. Guided by the UN Sustainable Development Goals, we have green accreditations for environmental, staff and guest initiatives. Sourcing local produce and supplies while minimising single use items is our priority. By cultivating seasonal vegetables and herbs from our walled garden and rearing Longhorn Cattle and Cheviot Sheep on our working farm, our award winning cuisine served in our restaurant, bar and café is as sustainable as we can make it.

This evolving and embedded ethos allows us all to enjoy the luxury of the Estate whilst protecting our natural environment for generations to come.





# Killeavy

Castle Estate



12 Ballintemple Road, Killeavy, Newry, County Armagh, BT35 8LQ

Phone: +44 (0) 28 3044 7999 Email: [spa@killeavycastle.com](mailto:spa@killeavycastle.com)

[killeavycastle.com](http://killeavycastle.com)

